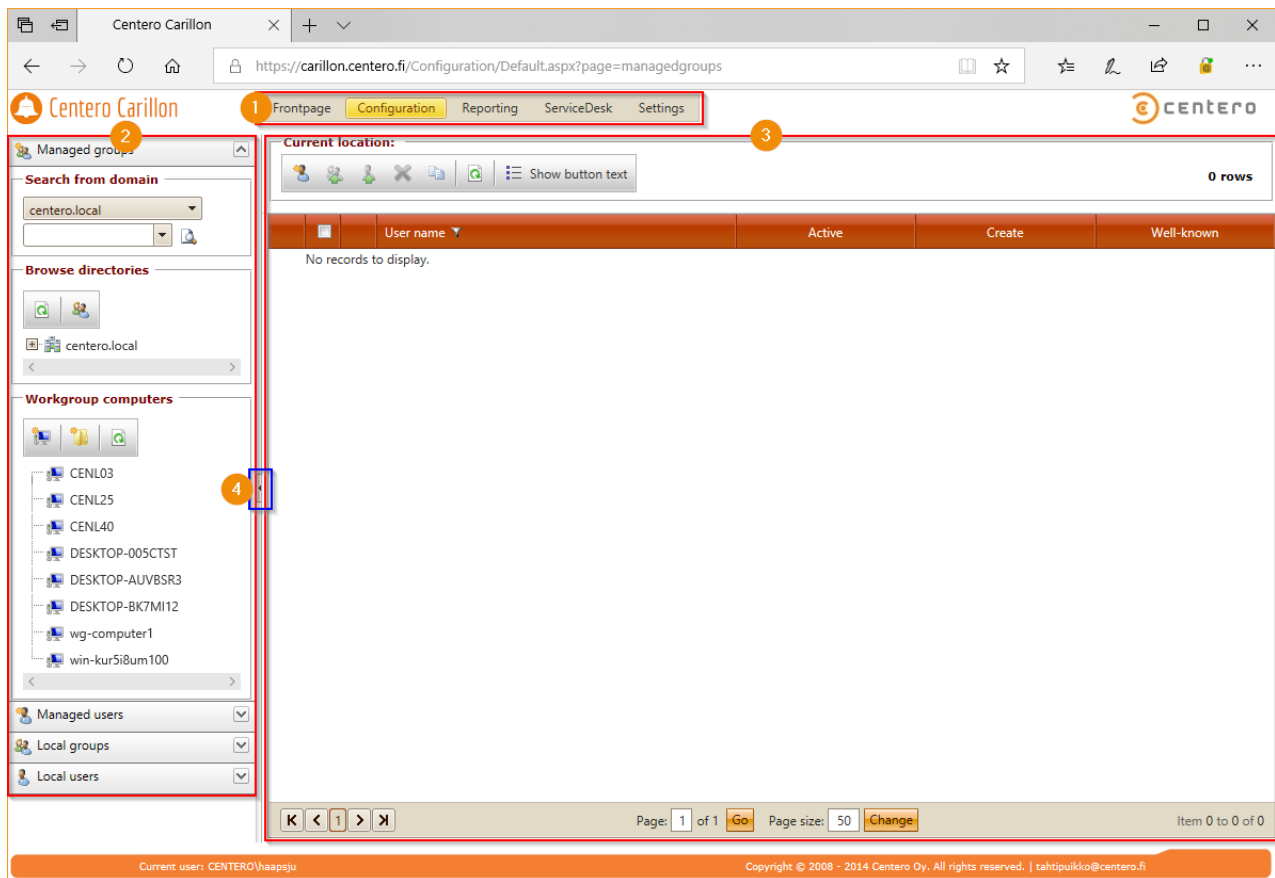


Navigation and data area

Last Modified on 06/11/2018 11:46 am EET

Portal sites are using common main layout with navigation and data areas.



1. Main navigation

This menu is used to move between different pages on Portal. Usually main menu sub items are the same as page navigation (2) panels

2. Page navigation

Page navigation contains controls to select data to be displayed on the data area (3). Page navigation is built on panels where one panel can be opened or expanded. When a panel is opened or expanded, other panels are automatically closed or collapsed. You can use expand/collapse icons on a panel to open/close panels or you can click the panel header to open the panel

3. Data area

Data area will show detailed data for the item currently selected in the navigation area. Some navigation area items do not have any data to be displayed, then data

area will show it's current contents or it will change to blank.

4. Splitter

Splitter can be used to collapse/expand page navigation or change the width of the page navigation