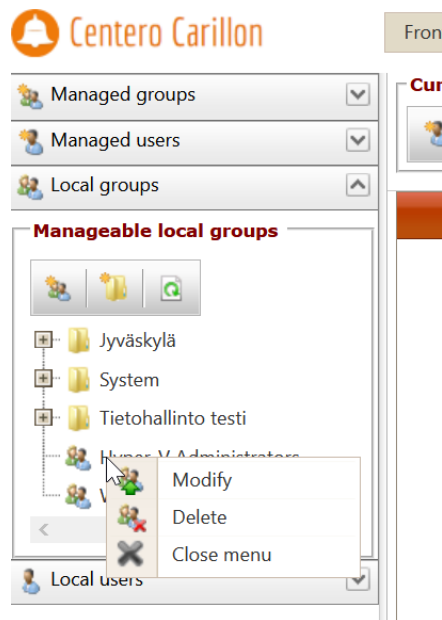


# Local groups

Last Modified on 10/09/2020 3:13 pm EEST

Local groups are used to specify all local groups in your environment that you want to manage on your Carillon Clients. There are predefined list of well known groups but you can create additional local groups that can then be managed by creating management rules for the group.



## 1. Create local group

Create a new local group that can then be managed by creating management rules for the group. See more information in '[Create local group](#)' chapter.

## 2. Create category

Create a new category to organize local groups, local users and workgroup computers. See more information in '[Create category](#)' chapter.

## 3. Categories and local groups

Categories and local groups are shown in tree structure.

You can modify and delete existing categories by right clicking category folder. See more information in '[Categories](#)' chapter.

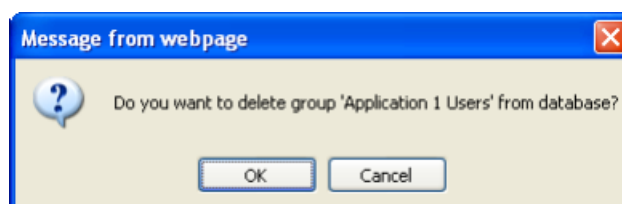
You can modify and delete existing local groups by right clicking local group.

## 4. Modify local group

Modify existing local group. See more information in '[Modify local group](#)' chapter.

## 5. Delete local group

Delete existing local group. All local group management rules are deleted if you delete the local group! You need to verify the delete action before local group is deleted.



Click OK to delete local group and Cancel to cancel the delete operation.

---