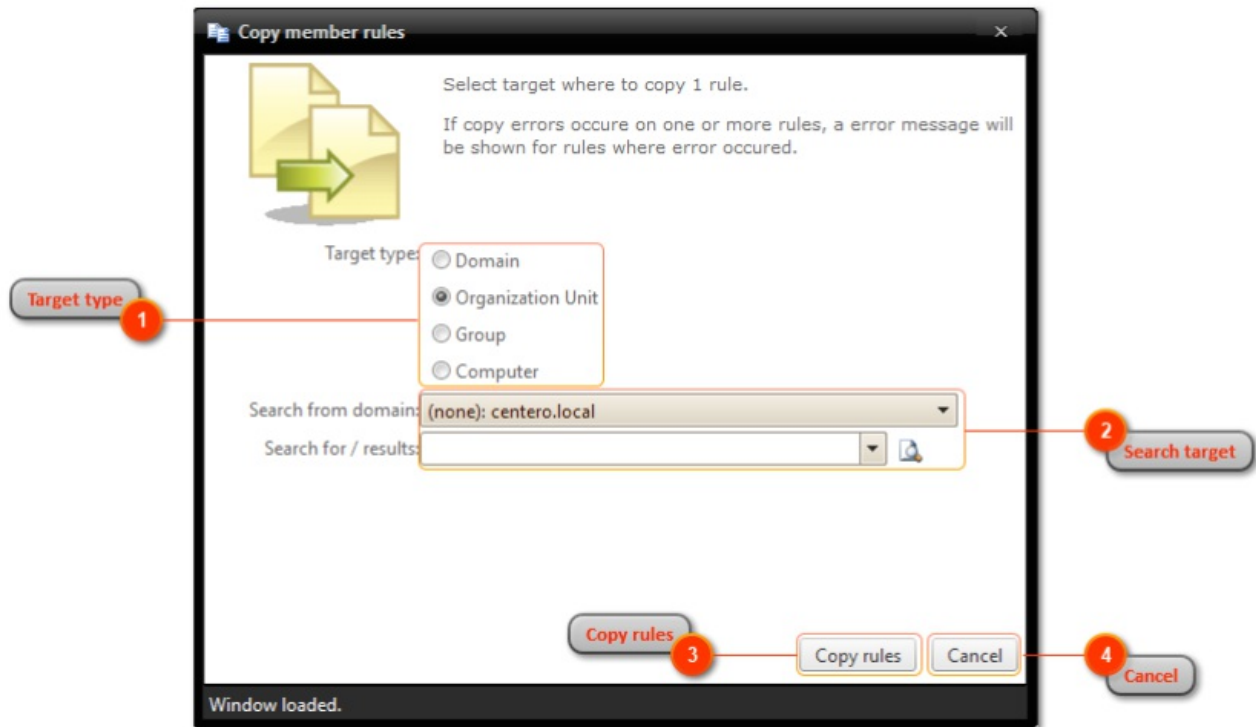


Copy managed group rules

Last Modified on 22/09/2020 11:13 am EEST



1. Target type

Select target type where you want to copy rules

2. Search target

Use Active Directory search to find target where you want to copy rules. Only domain selection is available when target type is Domain, otherwise object search is also shown. See more information in '[Active Directory search](#)' chapter.

3. Copy rules

Copy rules to selected target. If errors occur during rule copying, the rules that could not be copied are shown on screen. If no errors during rule copying the window will be automatically closed.

4. Cancel

Cancel rule copy and close the window.